

Cisco Catalyst 9400 Switch Datasheet



Router-Switch.com
Leading Network Hardware Supplier

CONTENT

Overview	2
Appearance	2
Chassis Features	3
Supervisor Configuration	5
Line Card Configuration Options	5
Specifications	6
Ordering Information.....	8
Additional Information	11
Where to Buy	11
Sources.....	11

Contact Us

Tel: +1-626-239-8066 (USA) +852-3050-1066 / +852-3174-6166 /

Fax: +852-3050-1066 (Hong Kong)

Email: cisco@router-switch.com (Sales Inquiries)

ccie-support@router-switch.com (CCIE Technical Support)

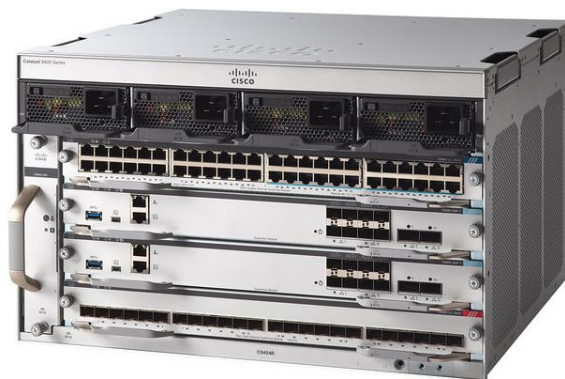
OVERVIEW

Cisco Catalyst 9400 is the next generation of the industry's most widely deployed enterprise switching platform. These modular access switches are built for security, Internet of Things (IoT), and the cloud. They deliver state-of-the-art high availability, support up to 8 Tbps, and form one of the building blocks for SD-Access, Cisco's leading enterprise architecture. (Figure 1).

APPEARANCE

Figure 1. Cisco Catalyst 9400 Series Switches

C9404R



C9407R



C9410R



CHASSIS FEATURES

Catalyst 9400 switches are modular switches, their chassis include these features:

Table 1. Cisco Catalyst 9400 Series chassis features

Feature	Cisco Catalyst C9404R Chassis	Cisco Catalyst C9407R Chassis	Cisco Catalyst C9410R Chassis
Total number of slots	4	7	10
Line-card slots	2	5	8
Supervisor engine slots	2 ¹	2 ²	2 ³
Dedicated supervisor engine slot numbers	2 and 3 ⁴	3 and 4 ⁴	5 and 6 ⁴
Supervisor engine redundancy	Yes	Yes	Yes

Supervisor engines supported	C9400-SUP-1, C9400-SUP-1XL, C9400-SUP-1XL-Y	C9400-SUP-1, C9400-SUP-1XL, C9400-SUP-1XL-Y	C9400-SUP-1, C9400-SUP-1XL, C9400-SUP-1XL-Y
Maximum PoE per slot	2880W ⁵	2880W ⁵	2880W ⁵
Maximum Bandwidth scalability per line-card slot	Up to 480 Gbps on all slots ⁶	Up to 480 Gbps on all slots ⁷	Up to 480 Gbps on all slots ⁸
Number of power supply bays	4	8	8
AC input power	Yes	Yes	Yes
Integrated PoE	Yes	Yes	Yes
Power supplies supported	3200W AC, 2100W AC	3200W AC, 2100W AC	3200W AC, 2100W AC
Number of fan-tray bays	1	1	1
Location of 19-inch rack-mount	Front	Front	Front

¹ Slots 2 and 3 are reserved for supervisor engines only in Cisco Catalyst C9404R; slots 1 and 4 are reserved for line cards.

² Slots 3 and 4 are reserved for supervisor engines only in Cisco Catalyst C9407R; slots 1-2 and 5-7 are reserved for line cards.

³ Slots 5 and 6 are reserved for supervisor engines only in Cisco Catalyst C9410R; slots 1-4 and 7-10 are reserved for line cards.

⁴ Linecards are not supported in the Supervisor slots.

⁵ Max PoE mentioned is as per the current shipping linecard, however chassis is capable ~4800W PoE per slot.

⁶ 80Gbps per line-card slot when used with C9400-SUP-1 and 240Gbps per line-card slot when used with C9400-SUP-1XL, C9400-SUP-1XL-Y.

⁷ 80Gbps per line-card slot when used with C9400-SUP-1 and 120Gbps per line-card slot when used with C9400-SUP-1XL, C9400-SUP-1XL-Y.

⁸ 80Gbps per line-card slot when used with C9400-SUP-1 and 80Gbps per line-card slot when used with C9400-SUP-1XL, C9400-SUP-1XL-Y

SUPERVISOR CONFIGURATION

The Catalyst 9400 Series need to configure supervisor.

Table 2. Cisco Catalyst 9400 Series supervisor engine maximum bandwidth per slot

Feature	Cisco Catalyst 9400 Series Supervisor Engine C9400-SUP-1	Cisco Catalyst 9400 Series Supervisor Engine C9400-SUP-1XL	Cisco Catalyst 9400 Series Supervisor Engine C9400-SUP-1XL-Y
Cisco Catalyst C9404R chassis	80 Gbps/slot	240 Gbps/slot	240 Gbps/slot
Cisco Catalyst C9407R chassis	80 Gbps/slot	120 Gbps/slot	120 Gbps/slot
Cisco Catalyst C9410R chassis	80 Gbps/slot	80 Gbps/slot	80 Gbps/slot

LINE CARD CONFIGURATION OPTIONS

Table 3. Cisco Catalyst 9400 Series line cards

Product Number	Description	Minimum Software Requirement
C9400-LC-48U	Cisco Catalyst 9400 Series 48-Port UPOE 10/100/1000 (RJ-45)	Cisco Open IOS-XE Software Release 16.6.1
C9400-LC-48T	Cisco Catalyst 9400 Series 48-Port 10/100/1000 (RJ-45)	Cisco Open IOS-XE Software Release 16.6.1
C9400-LC-48UX	Cisco Catalyst 9400 Series 48Port UPOE w/ 24p mGig 24p RJ-45	Cisco Open IOS-XE Software Release 16.6.2

Product Number	Description	Minimum Software Requirement
C9400-LC-24XS	Cisco Catalyst 9400 Series 24-Port 10 Gigabit Ethernet (SFP+)	Cisco Open IOS-XE Software Release 16.6.2
C9400-LC-48P	Cisco Catalyst 9400 Series 48-Port POE+ 10/100/1000 (RJ-45)	Cisco Open IOS-XE Software Release 16.8.1
C9400-LC-24S	Cisco Catalyst 9400 Series 24-Port Gigabit Ethernet(SFP)	Cisco Open IOS-XE Software Release 16.8.1
C9400-LC-48S	Cisco Catalyst 9400 Series 48-Port Gigabit Ethernet(SFP)	Cisco Open IOS-XE Software Release 16.8.1

SPECIFICATIONS

Table 4. Specifications of Catalyst 9400 Switches chassis

Specification	C9404R	C9407R	C9410R
Dimensions (H x W x D)	10.47 x 17.30 x 16.30 in. (26.53 x 43.94 x 41.40 cm)	17.41 x 17.30 x 16.30 in. (44.22 x 43.94 x 41.40 cm)	22.61 x 17.30 x 16.30 in. (57.43 x 43.94 x 41.40 cm)
Rack Units (RU)	6 RU	10 RU	13 RU
Chassis weight (with fan tray)	39.0 lb (17.2 kg)	63.0 lb (28.58 kg)	65.0 lb (29.48 kg)
Mounting	19-in rack compatible (19-in. rack and cable guide hardware included)	19-in rack compatible (19-in. rack and cable guide hardware included)	19-in. rack compatible (19-in. rack and cable guide hardware included)

Table 5. Specifications of Catalyst 9400 Switches power supply

Power Supply	3200W AC	2100W AC
Integrated PoE	Yes	Yes
Input current (rated)	<ul style="list-style-type: none"> • 16A at 100 VAC • 16A at 200 VAC 	<ul style="list-style-type: none"> • 10.4A at 100 VAC • 10.4A at 200 VAC
Input voltage	100 to 240 VAC ($\pm 10\%$ for full range)	100 to 240 VAC ($\pm 10\%$ for full range)
Output current (data)	<ul style="list-style-type: none"> • 55V at 58.0A/28.36A (230/115VAC ranges) • 3.3V at 3.0A 	<ul style="list-style-type: none"> • 55V at 38.21/17.09A (230/115VAC ranges) • 3.3V at 3.0A
Output power (N+N) redundant mode (PoE + data)	<p>$(3190W \times N)/2 + 10W$ (3.3V standby) for 230VAC range</p> <p>$(1560W \times N)/2 + 10W$ (3.3V standby) for 115VAC range</p> <p>N = number of power supplies (N>1)</p>	<p>$(2102W \times N)/2 + 10W$ (3.3V standby) for 230VAC range</p> <p>$(940W \times N)/2 + 10W$ (3.3V standby) for 115VAC range</p> <p>N = number of power supplies (N>1)</p>
Output power (N+1) redundant mode (PoE + data)	<p>$(3190W \times (N-1)) + 10W$ (3.3V standby) for 230VAC range</p> <p>$(1560W \times (N-1)) + 10W$ (3.3V standby) for 115VAC range</p> <p>N = number of power supplies (N>1)</p>	<p>$(2102W \times (N-1)) + 10W$ (3.3V standby) for 230VAC range</p> <p>$(940W \times (N-1)) + 10W$ (3.3V standby) for 115VAC range</p> <p>N = number of power supplies (N>1)</p>
Output Power Combined mode (PoE + data)	$(3190W \times N) + 10W$ (3.3V standby) for 230VAC range	$(2102W \times N) + 10W$ (3.3V standby) for 230VAC range

Power Supply	3200W AC	2100W AC
	(1560W x N) + 10W (3.3V standby) for 115VAC range N = number of power supplies (N>1)	(940W x N) + 10W (3.3V standby) for 115VAC range N = number of power supplies (N>1)
Heat dissipation	950 BTU/hr x N N = number of power supplies	460 BTU/hr x N N = number of power supplies
Holdup time	20 ms	20 ms
Hot swappable	Yes	Yes
MTBF	300,000 hours	300,000 hours
Minimum Software Requirement	Cisco Open IOS-XE Software Release 16.6.1	Cisco Open IOS-XE Software Release 16.8.1

ROUTER-SWITCH.COM ORDERING INFORMATION

Table 6. Order these items via Router-switch.com.

SKU	Description
C9404R	Cisco Catalyst 9400 Series 4 slot chassis
C9407R	Cisco Catalyst 9400 Series 7 slot chassis
C9407R=	Cisco Catalyst 9400 Series 7 slot chassis Spare
C9410R	Cisco Catalyst 9400 Series 10 slot chassis
C9410R=	Cisco Catalyst 9400 Series 10 slot chassis
C9407R-96U-BNDL-A	Catalyst 9400 Series 7 slot, Sup, 2xC9400-LC-48U, DNA-A LIC

C9407R-96U-BNDL-E	Catalyst 9400 Series 7 slot, Sup, 2xC9400-LC-48U , DNA-E LIC
C9410R-96U-BNDL-A	Catalyst 9400 Series 10 slot, Sup, 2xC9400-LC-48U, DNA-A LIC
C9410R-96U-BNDL-E	Catalyst 9400 Series 10 slot, Sup, 2xC9400-LC-48U, DNA-E LIC
C9404R-48U-BNDL-A	Catalyst 9400 Series 4 slot, Sup, 1xC9400-LC-48U, DNA-A LIC
C9404R-48U-BNDL-E	Catalyst 9400 Series 4 slot, Sup, 1xC9400-LC-48U, DNA-E LIC
C9400-DNA-P-5Y	C9400 DNA Premier 5 Year Term License
C9400-SUP-UPG-LIC=	Catalyst 9400 Supervisor Software Upgrade Paper License
C9400-SUP-1XL-Y	Cisco Catalyst 9400 Series Supervisor 1XL-Y with 25G Module
C9400-SUP-1XL-Y/2	Cisco Catalyst 9400 Series Redundant Supervisor 1XL-Y with 25G Module
C9400-S-BLANK	Cisco Catalyst 9400 Series Slot Blank Cover
C9400-SR-BLANK=	Cisco Catalyst 9400 Series R Slot Blank Cover (Spare)
C9410-FAN=	Cisco Catalyst 9400 Series 10 slot chassis Fan Tray
C9407-FAN=	Cisco Catalyst 9400 Series 7 slot chassis Fan Tray
C9410-ACC-KIT=	Cisco Catalyst 9400 Series 10 slot chassis Accessory Kit
C9407-ACC-KIT=	Cisco Catalyst 9400 Series 7 slot chassis Accessory Kit
C9410-RACK-KIT=	Cisco Catalyst 9400 Series 10 slot chassis Rack Mount
C9407-RACK-KIT=	Cisco Catalyst 9400 Series 7 slot chassis Rack Mount
C9410-SHELF-KIT=	Cisco Catalyst 9400 Series 10 slot chassis Shelf Install Kit

C9407-SHELF-KIT=	Cisco Catalyst 9400 Series 7 slot chassis Shelf Install Kit
C9400-PWR-2100AC	Cisco/Cisco Switches/Cisco Switch Catalyst 9400/Cisco Switch Catalyst 9400 Accessories
C9400-PWR-BLANK	Cisco/Cisco Switches/Cisco Switch Catalyst 9400/Cisco Switch Catalyst 9400 Accessories
C9407-RACK-19-KIT=	Cisco/Cisco Switches/Cisco Switch Catalyst 9400/Cisco Switch Catalyst 9400 Accessories
C9410-RACK-19-KIT=	Cisco/Cisco Switches/Cisco Switch Catalyst 9400/Cisco Switch Catalyst 9400 Accessories

Note: Configure a Catalyst 9400 switch, you need order chassis, supervisor engine, linecards, power supplies, fan tray, and power cord. Welcome to [contact us](#) to quote.

ADDITIONAL INFORMATION

[Guide to Upgrade Cisco Access and Backbone Switch](#)

[Cisco's New Switch Selection Decision 2018](#)

WHERE TO BUY

Want to buy this series of products? please contact:

- Tel: +1-626-239-8066 (USA)/ +852-3050-1066 / +852-3174-6166
- Fax: +852-3050-1066 (Hong Kong)
- Email: sales@router-switch.com (Sales Inquiries)

Or visit: [Cisco Catalyst 9400 Series Switches](#)

About us

Router-switch.com, founded in 2002, is one of the biggest Global Network Hardware Supplier. We are a leading provider of network products with 14,500+ customers in over 200 countries. We provide original new and used network equipments (Cisco, Huawei, HPE, Dell, Hikvision, Juniper, EMC, etc.), including Routers, Switches, Servers, Storage, Telepresence and Videoconferencing, IP Phones, Firewalls, Wireless APs & Controllers, EHWIC/HWIC/VWIC Cards, SFPs, Memory & Flash, Hard Disk, Cables, and all kinds of network solutions related products.

SOURCES

https://www.cisco.com/c/en/us/products/collateral/switches/catalyst-9400-series-switches/data_sheet-c78-739053.html